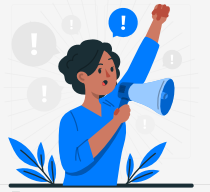


GROW[↑] MORE
IMPRESSIONS THAT MATTER.

IMPRESSIONS THAT MATTER.





ADS



BRANDEXPOSURE



LED TRUCKS



GET NOTICED

Grow More offers an effective and affordable solution for mobile digital billboard advertising on the go. Our digital LED billboard fleet is driven to obtain maximum exposure for your brand. Grow More's highly visible advertising space on the sides of our LED trucks, is one of the best solutions for Out-Of-Home OOH advertising needs. When our LED trucks are on the road, your audience engagement Grows More exponentially.

OUR MEDIATRUCKS PROVIDE



HD audio and video OOH advertisements



Bright LED video displays



Location based advertising



Different advertisements during different times of the day



End of the day GPS report of the travel route

Our media trucks travel throughout your market on predetermined routes through the day and also during prime time traffic periods. Our routes are based on the latest traffic counts targeting streets to maximize the exposure. We identify morning and afternoon rush hours, evening and weekend routes while scheduling exposure during dozens of special events happening in your area. 97% of people can recall the ads from mobile billboard advertising compared to 58% of people remembering ads they saw online or on a smartphone. It's also 2 times more effective than static billboards.



Ads that are Impossible to Miss



Flexible Campaigns



Cost Effective



Captivating Platform



Focused On Target Audience



Create Vast Impressions Instantly

AD SPECIFICATIONS



TYPE

- No typography should be smaller than 50 pixels/point
- For legibility purposes, it is recommended you use San-Serif fonts with thick strokes

IMAGES

- Images should not exceed the screen dimensions stated above.
- Resolution should be minimum 72pixels/inch and use RGB Colors. Pixel Aspect Ratio is recommended to be Square Pixels1:1

VIDEOS

- It is preferable to send artwork in FULL-FRAME Format.
- Avoid Using White backgrounds or too much white in art work.
- Frame Rate of 30fps, MPEG 4 Video, Data Rate of 7000 kbits/sec